

Schools in the Capital City LLEN (City of Melbourne)

School name	Primary Schools	Contact details
Carlton Gardens Primary School	Carlton Gardens Primary School is located on the edge of Melbourne's CBD. It stands opposite Carlton Gardens and the Melbourne Museum on busy Rathdowne Street. The historic building which is heritage listed, is situated just one block from the vibrant Lygon Street precinct and is close to the University of Melbourne and The Royal Melbourne Institute of Technology. The school has close links with the Museum and these Universities.	215 Rathdowne St, Carlton VIC 3053 (03) 9663 6502 http://www.carltongardens.vic.edu.au/
Kensington Primary School	Kensington Primary School , located four kilometers from the center of Melbourne, is one of the oldest schools in Victoria. It has served its vibrant and rapidly changing inner city neighborhood since 1881 and is proud of the role it plays in community life today.	62-74 McCracken St, Kensington 3031 (03) 9376 6013 http://www.kensingtonps.vic.edu.au/
North Melbourne Primary School	North Melbourne Primary School strives to develop a supportive and inclusive learning environment for the areas diverse community. Professional teaching and learning milieu inspires students to become literate, numerate, socially competent, independent and inquisitive learners. The community connects with the nearby academic and medical institutions, Docklands precincts and inner-city dwellers. NMPS has been granted an enrolment ceiling for a number of years and its first priority is to enroll students and their siblings residing in our local neighborhood area.	210 Errol St, North Melbourne VIC 3051 (03) 9329 6902 http://www.northmelbourneps.vic.edu.au/
St. Michael's Primary School	St. Michael's Primary School is a small catholic school in North Melbourne welcomes children and their families to a world of opportunities for learning. As a family partnerships school, they welcome culturally diverse, Catholic and multi-faith families to come together and learn as a community.	8 Brougham St, North Melbourne VIC 3051 (03) 9329 9206 http://smnthmelbourne.catholic.edu.au/
Christ Church Primary Grammar School	Christ Church Grammar School is a long established Anglican co-educational primary school in South Yarra. We offer quality education for children from 3-year-old Kindergarten to Year 6. Christ Church is dynamic learning environment where the individual is nurtured. The School believes in strong community relationships that lead to a sense of belonging and a rich and diverse curriculum that meets the needs of each student.	677 Punt Rd, South Yarra VIC 3141 (03) 9866 3540 https://www.ccg.vic.edu.au/enrolment

South Yarra Primary School

South Yarra Primary School is committed to excellence across the entire curriculum. The explicit teaching and learning program has a focus on individual students. The school is structured intentionally to maximise learning opportunities for our population of children from a wide variety of backgrounds. The school provides a wide variety of extra-curricular programs. Student wellbeing is a high priority and intervention is made available for all students who require it. A strong partnership exists between community and school where the teaching and learning team are highly valued.

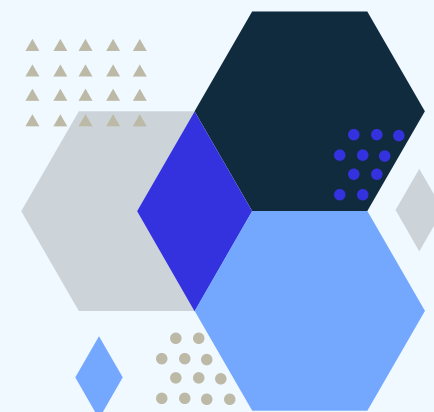
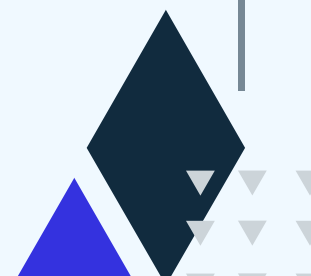
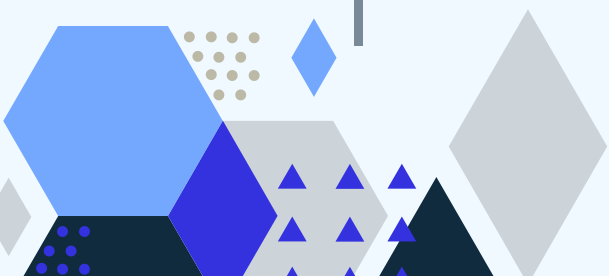
601 Punt Rd, South Yarra VIC 3141
(03) 9866 3424
<http://www.southyarraps.vic.edu.au/>

Carlton Primary School

Carlton Primary School is a small, vibrant inner-city school with extensive grounds, gardens and play areas, located close to Melbourne CBD. The school celebrates its multicultural nature and is proud of its academic results. A unique feature of our school is a family/community engagement worker who supports and resources capacity building programs for students and their families. Carlton Primary School prides itself on the close relationship between teachers and students, and its capacity to meet individual needs.

During 2018 the school was under-going significant renovations and will not only provide great facilities for students going forward but also for their families and local community through the shared facilities and community spaces being provided. The Carlton Early Learning and Family Services Centre will bring education and care, maternal and child health, parenting services and play groups under one roof. Opening in 2019, the 98 place centre, located within Carlton Primary School, will be Melbourne's first integrated learning centre, providing educational opportunities across early and primary years.

Cnr of Palmerston & Drummond Sts,
Carlton VIC 3053
(03) 9347 6022
<http://carltonprimarieschool.vic.edu.au/>



Secondary Schools

Kensington Community High School

Kensington Community High School is a school that prides itself on practical learning initiatives, a safe and supportive educational environment and improved futures for students. The school believes in providing a quality education to students who have had difficulty accessing or maintaining an education within the mainstream education system. Students from years 7 to 12 have a choice of targeted and managed electives that provide students with a broad and engaging curriculum program. At Years 10, 11 and 12 Vocational Education and Training (VET) certificate programs are also provided with a focus on facilitating the transition between school and the workforce. In Years 11 and 12 a VCAL program is offered with emphasis placed on practical "hands on", applied learning. The school is small, with a population of approximately 90 students enrolled at any given time.

405 Racecourse Rd, Kensington VIC 3031
(03) 9376 1953
<http://www.kchs.vic.edu.au/>

Melbourne Girls Grammar

Melbourne Girls Grammar (MGGS) is an Anglican School for girls from Early Learning to Year 12 catering for students across the full range of academic ability. The School is divided into four stages of schooling; Early Learning – 3 and 4 Year old's, Junior Years – Prep to Year 4, Middle Years – Years 5 - 8, and Senior Years – Years 9 - 12. MGGS is a community that embraces its diversity and seeks to offer rich and varied opportunities for all types of girls to pursue their passions and interests. Melbourne Girls Grammar sees itself as a forward-looking community and understand that our students must be prepared for life in an increasingly complex and globally connected world. Their focus is the development of young women with the confidence.

86 Anderson St, South Yarra VIC 3141
(03) 9862 9200
<http://www.mggs.vic.edu.au/>

Melbourne Grammar School

Situated in the heart of Melbourne, **Melbourne Grammar School** is one of Australia's oldest schools, committed to being one of the world's leading teaching and learning institutions. Established in 1858, it is an independent Anglican school which attracts students of outstanding academic ability whose final year results are consistently among the country's highest. Most students move to tertiary education and on to professional careers. The School counts many of Australia's highest profile politicians, community and business leaders, academics and sportsmen among its alumni, as well as three former Prime Ministers. Our vision is to create an innovative, dynamic and technology-rich learning environment that provides every student with opportunities for success, self-discovery and leadership.

355 St Kilda Rd, Melbourne VIC 3004
(03) 9865 7555
<http://www.mgs.vic.edu.au/mg/>

University High School

The University High School caters for approximately 1,225 students, most of whom reside in the local area. A proportion of the School's enrolment comes from further afield to participate in special programs like our music and gifted education program. The school population has a broad socio-economic, cultural and ethnic diversity.

77 Story St, Parkville VIC 3052
(03) 9347 2022
<http://www.unihigh.vic.edu.au/>

Victorian College for the Deaf

The Victorian College for the Deaf was established in 1860 and is one of Australia's oldest school for deaf and hard of hearing students. The college provides programs for both primary and secondary aged students. Some country students reside during the week at a family group home located in the south-eastern suburbs.

597 St Kilda Rd, Melbourne VIC 3004
(03) 9510 1706



Victorian College of the Arts

The Victorian College of the Arts Secondary School provides a nationally and internationally recognized specialist program for the training of talented young dancers, musicians and visual artists. Integral to this program is the provision of a high-quality academic education that is also offered to other exceptional training organizations.

This school has 46.4 equivalent fulltime staff, 2 principal class, 34 teachers and 10.4 educational support staff.

234 St Kilda Rd, Southbank VIC 3006

(03) 8644 8644

<http://vcass.vic.edu.au/>

Wesley College-Melbourne

Established in 1866, **Wesley College Melbourne**, an open-entry school of the Uniting Church and is one of the largest independent coeducational schools in Australia. Wesley has 3 metropolitan campuses, Elsternwick, Glen Waverley and St Kilda Road and international partnerships with schools around the world. Wesley offers a broad curriculum, a balanced approach to learning, a concern for the whole student and the provision of opportunities for all young people to learn to know, to do, to live with and to be, within an innovative and caring environment. The rich and comprehensive educational program promotes not only excellent academic results, but has a concentrated focus on the arts, sport, outdoor education and community. There is a primary and secondary school campus in the city.

234 St Kilda Rd, Southbank VIC 3006

(03) 8644 8644

<http://www.wesleycollege.net/>

Haileybury City Campus

Haileybury City Campus is a newly opened prep to grade 12 private school in Melbourne. The school features small class sizes. The Senior School (Years 9 to 12 by 2020) Students in Years 10 to 12 will have the option to spend time at Keysborough, where they can pick up extra subjects and participate in assemblies, House activities and sport. The campus has capacity for over 750 students.

383 King Street

West Melbourne

VIC 3003

T: +61 3 9904 6008

https://www.haileybury.com.au/about/campus_tour/city_campus_tour#city

